

# SAFESMART SNAPSHOTS

CONSTRUCTION - AVIATION - MINING - DEFENCE - TRANSPORT

PRODUCT  
SPECIALS  
INSIDE

## Introducing SMARTROOF

*MODULAR SOLUTION FOR TEMPORARY ROOFING*

Find out more about how SmartRoof is revolutionising and driving the future of sustainable construction.

**PAGE 2**

## SAFESMART ENGINEERING EXCELLENCE

SafeSmart's engineering team implements world-first intelligent scaffolding software providing accuracy and safety for temporary works design.

**PAGE 5**

EDITION 1

## AdaptaPanel

*ADAPTABILITY. FLEXIBILITY. VERSATILITY.*

Find out why AdaptaPanel is the most innovative edge protection system available on the market!

**PAGE 7**

## MASSIVE END OF FINANCIAL YEAR DEALS

**PAGE 8 - 10**

[www.safesmartaccess.co.nz](http://www.safesmartaccess.co.nz)  
[sales@safesmartaccess.co.nz](mailto:sales@safesmartaccess.co.nz)

 **SAFESMART  
ACCESS**  
*Reaching new heights*



# SMARTROOF

## THE BACKBONE OF ŌWAIRAKA'S MODULAR CONSTRUCTION

*Dive into Ōwairaka's modular construction, the challenges faced, and how **SmartRoof** emerged as a game-changing solution driving sustainable construction achievements.*

In the heart of Ōwairaka, a significant construction project is underway. The Richardson Road initiative, consisting of three six-storey apartment buildings, will bring 108 two-bedroom apartments to the area.

This project is unique because it utilises off-site manufactured timber modules. These modules were inspired by Swedish designs. The project is led by Property Partners. With the construction landscape in New Zealand rapidly evolving, the need for reliable and efficient solutions are paramount.



### **Navigating New Heights!** *The Unique Hurdles of 95% Complete Modules.*

While groundbreaking, the Evergreen Modular apartment building system introduces a distinct set of challenges. Unlike traditional construction methods, these modules arrive on-site 95% complete. This means that they need immediate weather protection to maintain their integrity from the moment they are craned into position.

The challenge intensifies when considering the need to safeguard these modules until the final piece is installed at full height for roof protection. Regular temporary roof covers don't work well here because they can't adjust to the specific needs of modular construction. Additionally, roof wraps fall into the same category.

*Header image supplied by Property Partners.*





## Innovation in Action

### *Proscaf Solutions for Modern Construction Challenges.*

Recognising the unique challenges posed by the Evergreen Modular system, Proscaf stepped in with its innovative SmartRoof rolling system. Unlike static temp roof cover solutions, SmartRoof is designed for adaptability.

It can be moved as needed, allowing the nearly complete modules to be seamlessly and safely lowered into their designated positions. Once a module is set, the SmartRoof can be rolled back, making space for the next module, and so on, until the final roof module is securely in place.

This dynamic roof structure protects each module from the elements throughout the construction process. By integrating the SmartRoof system into the project, Proscaf has provided a tailored solution that addresses the specific demands of modular construction, ensuring both efficiency and the integrity of each module.

Complementing SmartRoof's capabilities, Affordable Scaffolding brought its expertise to the table. Their vast experience in providing foundational scaffolding support for large-scale projects ensured that the construction process remained seamless and on track. Their experience with roofing wraps, Keder roof systems, and scaffolding wraps ensured that SmartRoof was installed correctly to protect the structure from adverse weather conditions.

Evergreen Modular, a subsidiary of Property Partners, played a pivotal role in the modular construction process. Their commitment to timber volumetric modular housing, which promotes healthier and more sustainable construction, aligned perfectly with the project's eco-friendly goals. Furthermore, they acknowledged the efficacy of SmartRoof in ensuring the modules remained dry during the on-site completion phase.

**PROSCAF**  
[www.proscaf.com](http://www.proscaf.com) | [sales@proscaf.com](mailto:sales@proscaf.com)

## SUCCESS STORY: UGL RAIL

UGL, a well-known rail company, faced a challenge in providing convenient and secure access to their trains for maintenance. They needed a creative solution.

In the bustling city of Bassendean, Perth, the hum of locomotives is a familiar sound. These powerful machines, responsible for transporting freight and bulk across vast distances, require regular maintenance to ensure smooth operation.



### THE CHALLENGE

UGL faced a unique challenge at their Bassendean facility. They needed a solution that would provide access to various types of locomotives that are constantly being maintained. This solution needed to work in multiple locations in the facility and be suitable for different locomotives. In addition to this, the platform needed to be capable of providing access to the entire roof area of the locomotive.

This is a common issue for many rail maintenance facilities worldwide. As the rail industry evolves, introducing newer and more advanced locomotive designs, maintenance becomes a complex task.

Facilities are often left grappling with outdated tools and platforms that aren't suited for modern locomotives.

### THE HVAC ACCESS SOLUTION

Drawing inspiration from a design previously delivered to bulk rail transport operators across Australia, UGL introduced the HVAC Access Platform and Edge Protection solution. The platform was not simply a replica of the previous design. It included unique features specifically tailored for the UGL maintenance facility in Bassendean.

One of the standout features of this platform is its dual height capability.

The platform allows maintenance engineers to access the roof and other important areas simultaneously. Other platforms only serve one purpose. This dual functionality ensures that other maintenance tasks can continue unhindered even when roof work is in progress.

SafeSmart Access has emerged as a trusted partner within the rail industry, providing cutting-edge access solutions to address the multifaceted challenges faced by rail operators.



## SAFESMART ENGINEERING EXCELLENCE

SafeSmart has now implemented innovative technology into their Temporary Works Design.

At **SafeSmart** there's no respite when it comes to enhancing our design process and sourcing new innovations to create market-leading products we are renowned for.

We are excited to announce we have implemented ScaffPlan, a world-first intelligent scaffolding software bringing game-changing accuracy and safety for temporary works design.

This revolutionary technology ensures millimetre accuracy and limits the risk of human error ensuring each temporary works design is compliant with safety standards and suited to your unique requirements.



This cutting-edge technology will bring a new dynamic experience to our Proscaf delivery partners at whatever stage of the scaffolding cycle. Our temporary design service is reaching new heights! ScaffPlan enables us to provide more accurate gear lists, on-the-fly adjustments for projects and realistic 3D renders to help visualise the scaffolding scope.

Reach out to SafeSmart today and see how we can revolutionise your temporary works design.



# PROSCAF

*Effortlessly Simple. Impossibly Versatile.*

**COMPLEX JOB?  
SEND US YOUR SCOPE!**

**SCAN THE CODE**

**RECEIVE A PROSCAF CONCEPT  
DESIGN FOR YOUR PROJECT!**

# TEMPORARY WORKS ENGINEERING MARVEL

Innovative Temporary Works Acoustic Wall Solution for Vaughan Civil Stabilisation Works.



Near residential areas, this work zone needed intelligent noise control atop a hill. SafeSmart Access jumped in with two solutions.

When approaching the challenge of noise control in a construction site, several options are available. For instance, temporary fencing or wooden hoarding may come to mind as feasible options. However, these solutions often fail in effectiveness, durability, and versatility.

SafeSmart Access was tasked with devising two noise mitigation solutions for Vaughan Civil that were superior and perfectly tailored to the site requirements.



1. SafeSmart designed, engineered and supplied a 3-metre high noise wall, approximately 160 metres long utilising Proscaf sub-structure bolted to the capping beam on site.



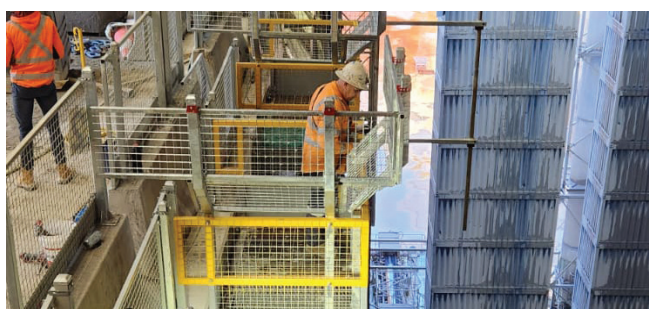
2. The second involved designing and supplying a 17-metre retractable acoustic curtain that spanned across the site driveway. The acoustic curtain was assembled and disassembled daily to accommodate the proposed night works.





## ADAPTAPANEL

This edge protection system features a heavy-duty framed panel arrangement to withstand site conditions, as well as slide-in panels making, AdaptaPanel fully modular for ease of disassembly and redeployment at another site. Posts bolt to the slab edge, giving it market-leading structural integrity in comparison to traditional scaffolding-type edge protection systems.

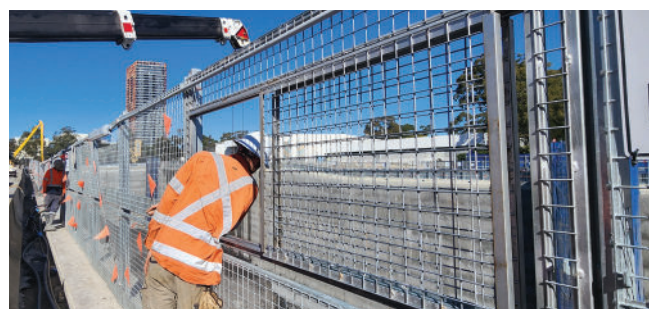


### ADAPTABILITY.

SafeSmart's in-house temporary works design team engineered a cantilevered cranked post, utilising AdaptaPanel panels, which enables personnel to get an overhead view into the excavation site below.

### FLEXIBILITY.

With a rise in sustainable construction, timber is becoming a more prominent material. SafeSmart developed a timber edge protection system utilising HDC-P/HDC-C timber construction screws, which met the relevant AS/NZS 4994 and AS 1657 Australian & New Zealand standards.



### VERSATILITY.

Typically installed as the upper panel into a 2mH post and panel arrangement, the AdaptaPanel sliding screen allows surveyors to have a clear view and scan and inspect the void below, whilst maintaining a 1mH mandatory edge protection at the opening.

# END OF FINANCIAL YEAR DEALS

SPEND **\$10K**  
ON PROSCAF  
SCAFFOLD  
& RECEIVE A  
**FREE** COFFEE  
MACHINE\*



Suitable for  
**Multi Capsules  
& Ground Coffee**

\*One per order & per customer. While Coffee Machine stocks last. Only available for purchases in March on Proscaf Scaffold components.

### PROSCAF 0.39M CANTILEVER BRACKET (HOP UP O-TYPE)

610.039



Was \$37.42ea



NOW  
**\$26.20**  
EACH

### PROSCAF TELESCOPIC GUARDRAIL/ LEDGER 1.09 - 1.57M

200.157



Was \$73.58ea



BUY 10 FOR  
**\$51.50**  
EACH

### USED PROSCAF ALUMINIUM Z STAIR 2.0M X 2.57M - O TYPE

AZS2.57



Was \$887.42ea

NOW  
**\$633.57**  
EACH

### PROSCAF TELESCOPIC GUARDRAIL/ LEDGER 1.57 - 2.57M

200.257



Was \$96.60ea



BUY 10 FOR  
**\$67.50**  
EACH

### LEACHES SCAFFOLDERS TOOL KIT

LSK3



Was \$558.00ea

NOW  
**\$465.00**  
EACH

# PROSCAF



## HEAVY DUTY MOBILE TOWERS IN NZ

### Aluminium Scaffold Tower – Double Width Professional Series

Aluminium Mobile Tower 4m Platform Height - MOMT400

- *Extra robust high tensile aluminium*
- *Quick set up with sturdy snaplock bracing*
- *Large 2.5m x 1.4m platform to comfortably hold 2 people*
- *Durable welded frame*

Other sizes available with large discounts. Contact us for a price on other sizes.



Was \$3992.42ea

**\$2999.00**

## MAINTENANCE PLATFORM

### Super Maintenance Platform (SMP)

Warthog HD Platform 1400mm 4 step - WHDP04

- *225kg SWL rating*
- *Built tough with marine grade aluminium*
- *Perforated & swaged deck for superior traction in wet & greasy conditions*
- *200mm solid rubber wheels allow for easy relocation on all terrains*
- *Complies to AS 1657:2018*
- *Perfect for access and maintenance on property and machinery*
- *Frequently used on construction sites*

Other sizes available with large discounts. Contact us for a price on other sizes.



Was \$3167.40ea

**\$2640.00**

## PORTABLE TEMPORARY STAIRS

### AdjustaStair's – The Smart Solution for Portable Access Stairs

AdjustaStair 0.6mW 06 step 0.9-1.4mH - TF6SS

- *600mm wide aluminium portable stairs.*
- *6 step height ideal for Truck Deck Access*
- *Portable stairs will self-level to suit the angle of the batter.*
- *Top and mid landings can be constructed from Proscaf or custom aluminium fabricated.*
- *Adjustability of the portable aluminium stairs makes them ideal for excavation access, where levels are constantly changing.*
- *Use AdjustaStair's instead of a ladder for your primary or secondary access.*
- *Much quicker to set up and move than a scaffold tower.*
- *Huge range of heights and 1200mm width available.*

Other sizes available with large discounts. Contact us for a price on other sizes.



Was \$2180.00ea

**\$1499.00**

PRICING EXCLUDES GST AND FREIGHT - STRICTLY WHILE STOCKS LAST - OFFER ENDS 31 MARCH 2024.

# SAFESEAL WRAP

- Superior shrinkage.
- Increased durability and longevity.
- Easier to weld & shrink in the wet.
- 18 months of UV protection.
- 100% recyclable.
- Designed for construction.



## 12 X 30M ROLL SKU: 23012X30



Was \$949.47ea

**NOW  
\$854.52**

9 ROLLS (PALLET)



(Price per roll)

**NOW  
\$749.81**

## 15 X 30M ROLL SKU: 23015X30



Was \$1185.35ea

**NOW  
\$1066.81**

9 ROLLS (PALLET)



(Price per roll)

**NOW  
\$938.40**

PRICING EXCLUDES GST AND FREIGHT - STRICTLY WHILE STOCKS LAST - OFFER ENDS 31 MARCH 2024.



**WE OFFER FREE RECYCLING FOR  
SAFE SEAL WRAP PRODUCT**

CONTACT US TO FIND OUT MORE





# CONQUIP EQUIPMENT CLEAROUT

High quality Construction Equipment

**5% PRICE GUARANTEE!**



SafeSmart Access in partnership with Conquip

Find a lower price for the same stocked product that is of similar quality and condition, and we'll beat it by 5%!

**GET A COPY OF OUR CONQUIP CLEARANCE RATES FLYER NOW!**

Clearance deals on material handling equipment, crane, excavator & forklift attachments & other CONQUIP products. While existing stock lasts.

Be advised to get in quick.



**SCAN THE CODE**

View the Clearance Price Flyer



**SAFESMART**  
**ACCESS**

*Reaching new heights*

NZ 0800 000 448

[www.safesmartaccess.co.nz](http://www.safesmartaccess.co.nz) | [sales@safesmartaccess.co.nz](mailto:sales@safesmartaccess.co.nz)

## **SAFESMART ACCESS TERMS & CONDITIONS**

Valid pricing excludes GST and freight. Offers are valid from 18th March 2024 until 31st March 2024. All promotions must be quoted at the time of purchase to receive a promotional offer. Not applicable to retrospective or future orders.